

STEEL BEAM CONNECTION SCHEDULE		
BEAM SIZE	BOLT SIZE	$\frac{3}{8}$ " MIN. THICK DOUBLE ANGLE W/ASTM F3125 GRADE A325-N TYPE 1, BEARING TYPE, SNUG-TIGHTENED.
ALL BEAM & TUBE SIZES	$\frac{3}{4}$ " $\phi$	USE MAXIMUM NUMBER OF BOLTS FOR BEAM DEPTH

CAP  $\frac{1}{2}$ " x SIZE REQ'D W/ ANCHOR RODS REQ'D PER PEMB, EXACT SIZE, ARRANGEMENT & DETAILS TO BE COORDINATED PRIOR TO SHOP DRAWING SUBMITTALS.

**Ragland Aderman & Associates**  
STRUCTURAL ENGINEERING  
3888 GOVERNMENT ST., SUITE 100  
BATON ROUGE, LA 70806  
(225) 343-4129  
PROJECT No. 90 202077

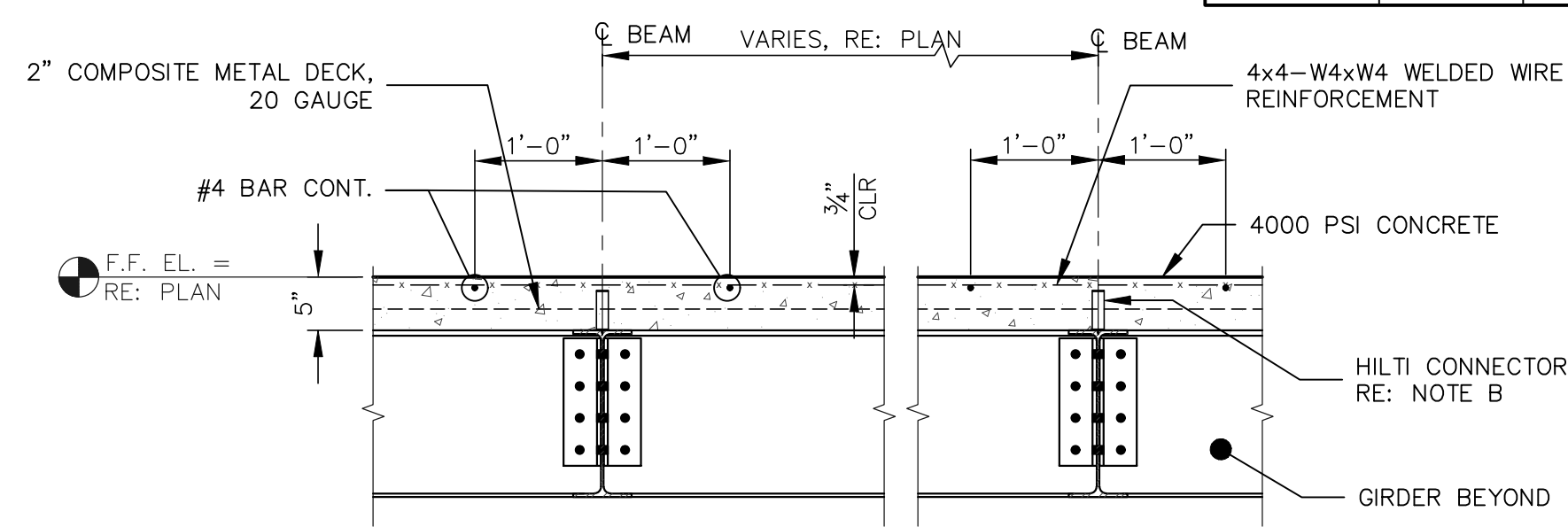
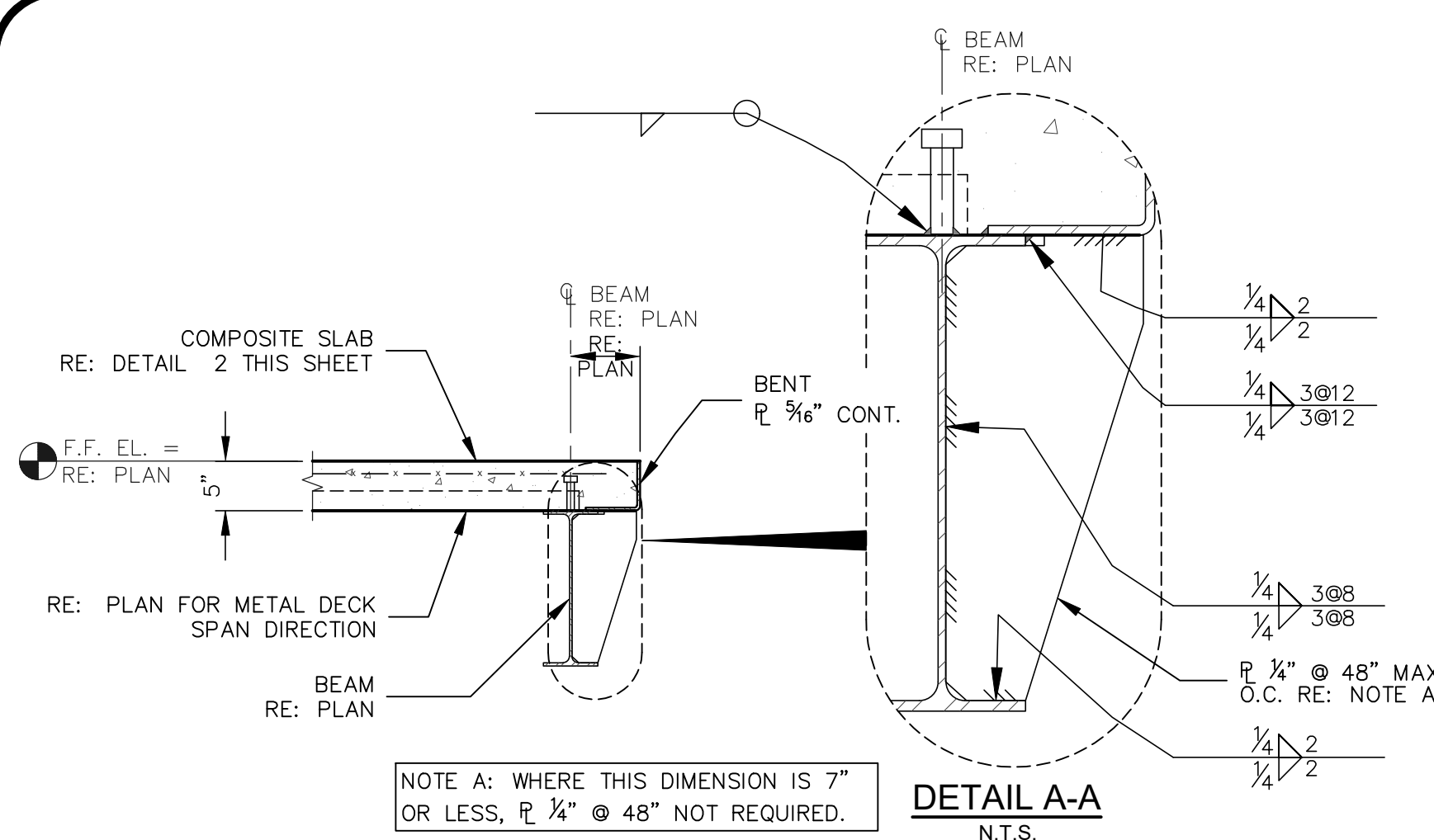


Project No. 0225  
Drawn By: PHH  
Approved By: TMW  
Preliminary Date: MARCH 31, 2024  
Release Date:  
File:

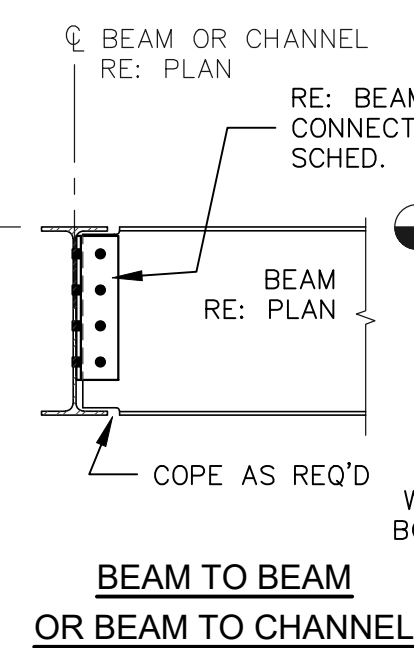
WAYNE LAWRENCE COCO, AIA, ARCHITECT, L.L.C.  
P.O. BOX 1111 - 510 MAIN ST.  
SIMMESPORT, LOUISIANA 71369  
318.397.3732 / FAX 318.941.2821  
Coco & Company  
a professional architectural company

FUTURE FARMERS OF AMERICA  
CONFERENCE CENTER  
MANSLURA, LOUISIANA, AT OLD RIVER

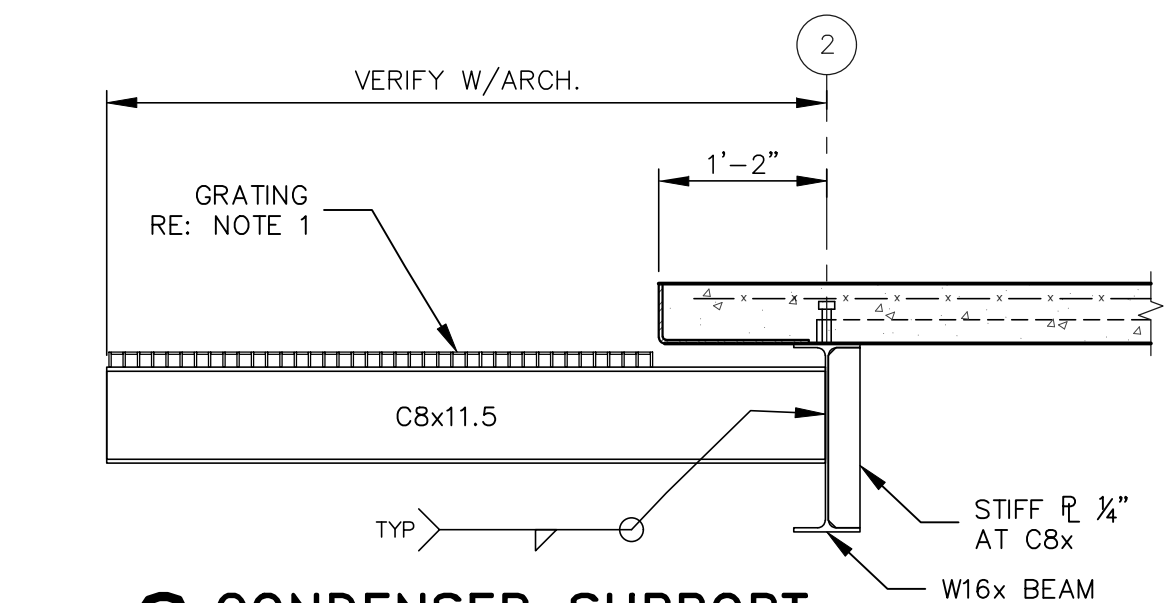
Sheet Number:  
**S2.3**  
22 of 40



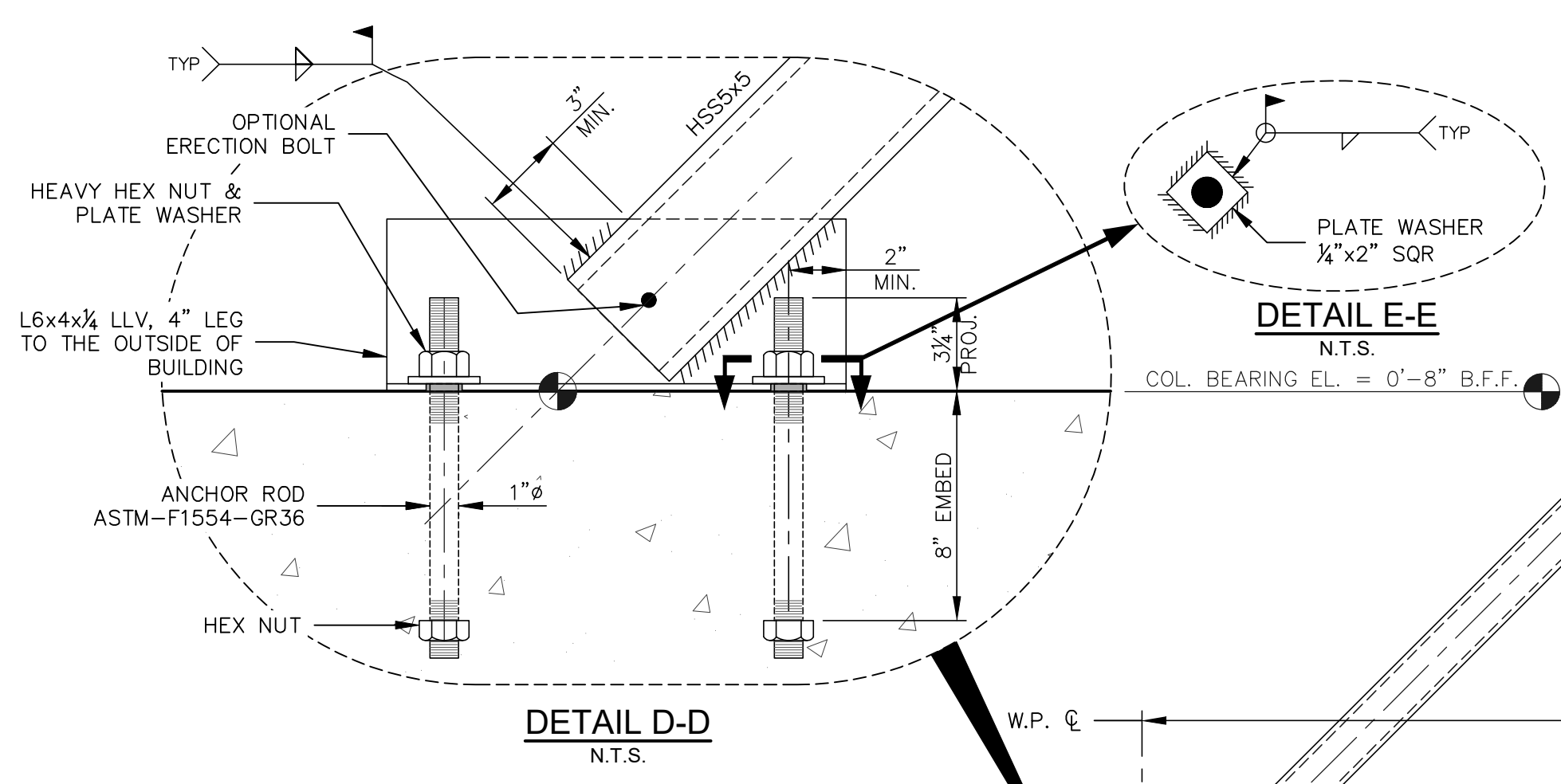
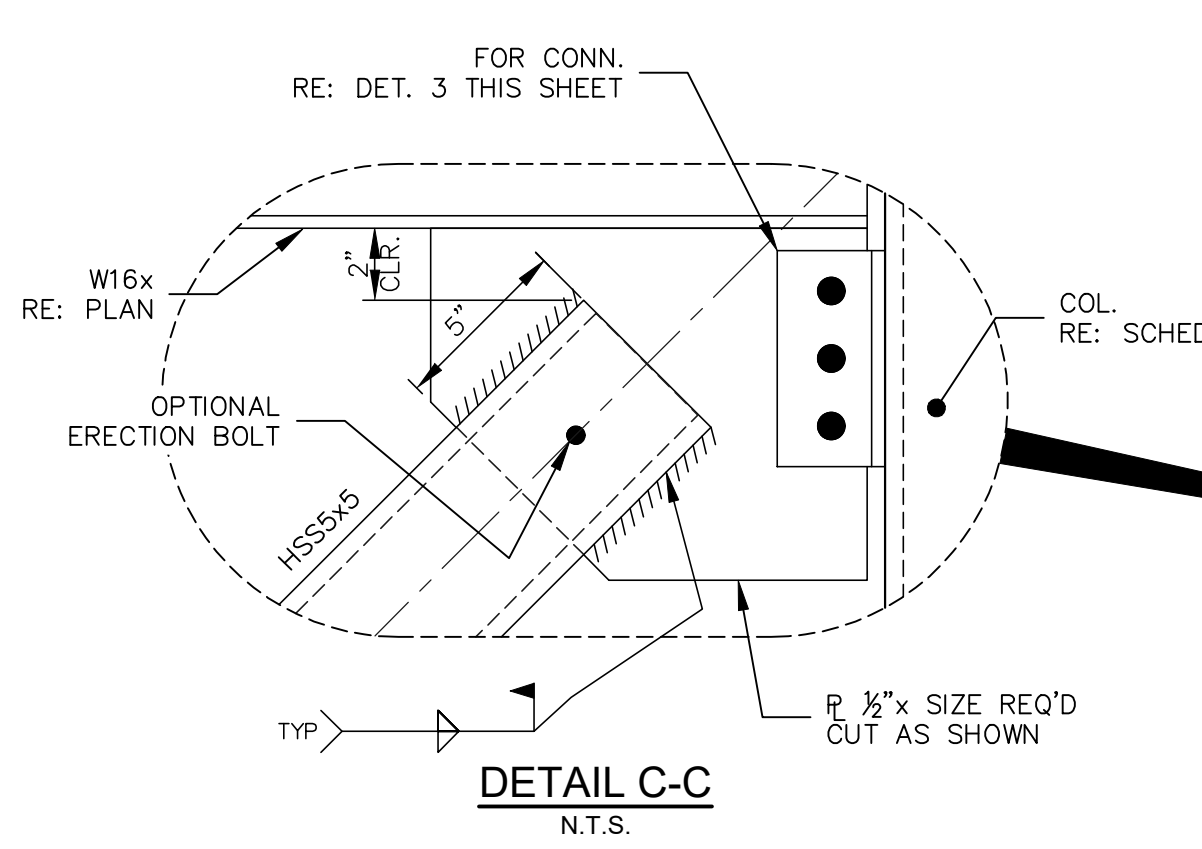
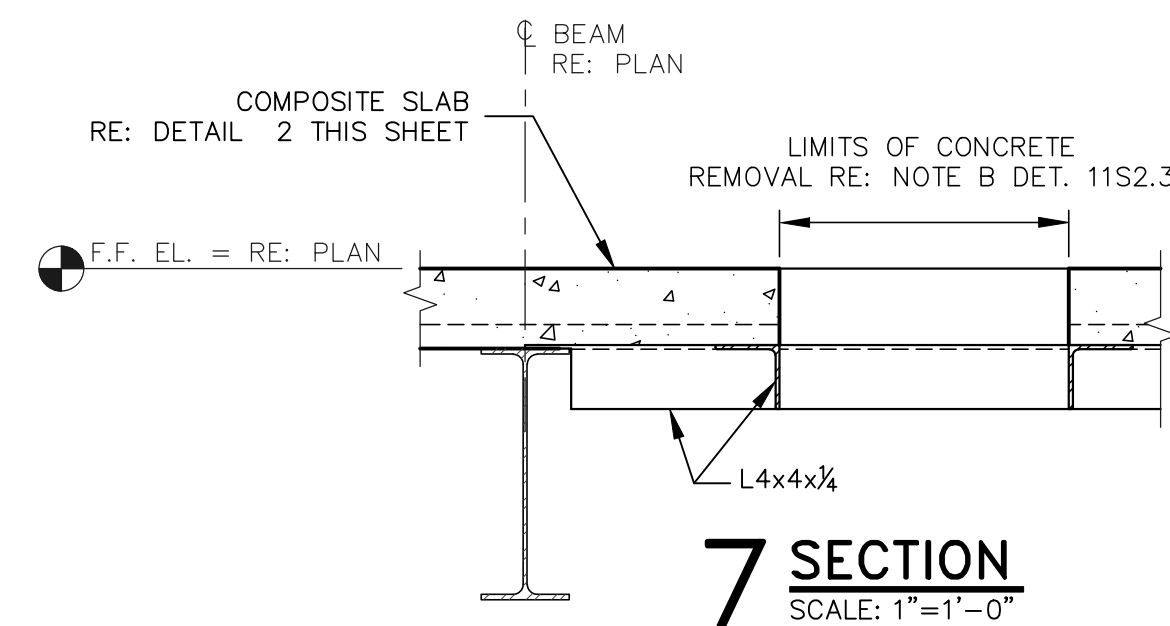
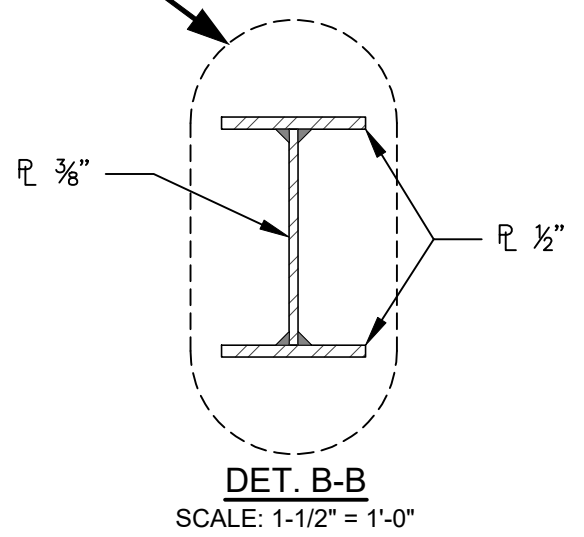
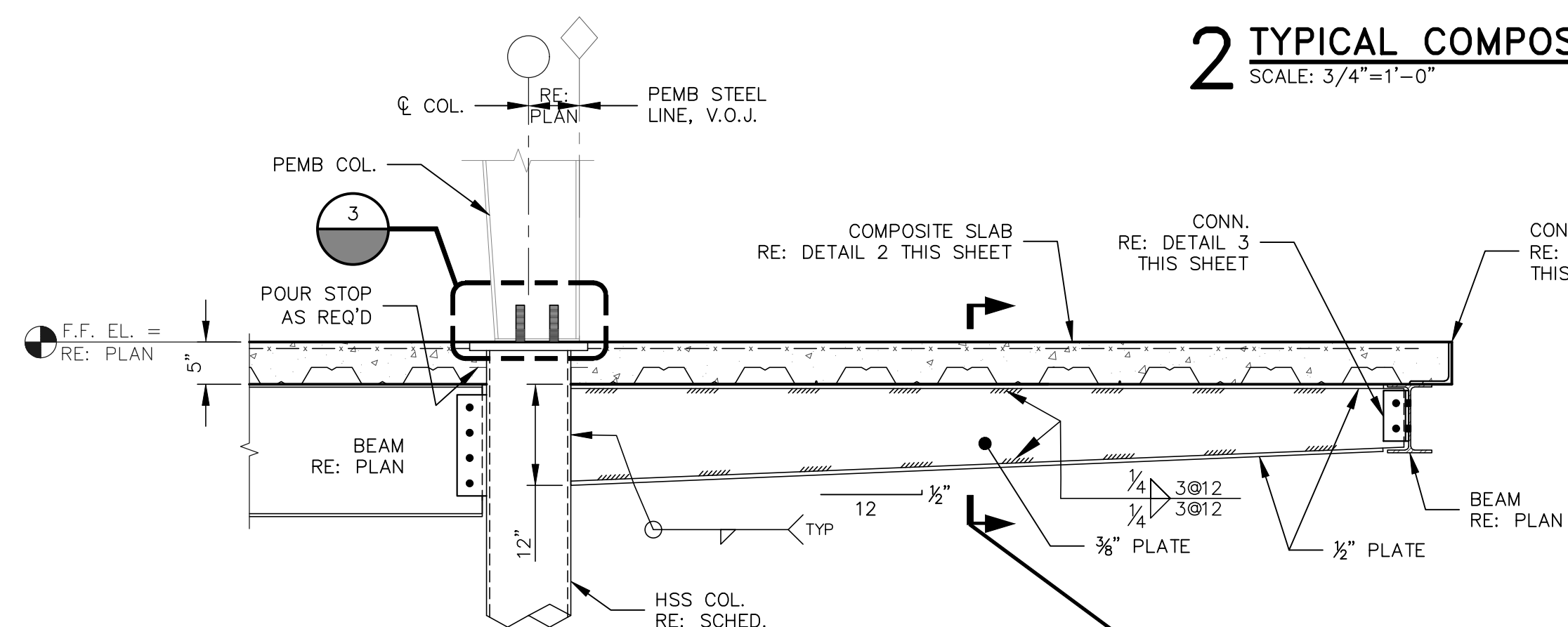
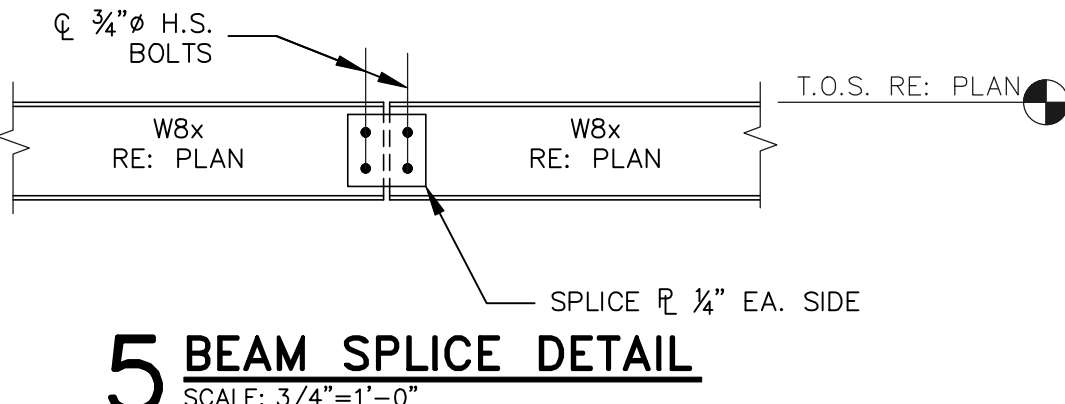
**NOTE B**  
PROVIDE HILTI X-HVB SHEAR CONNECTORS (MINIMUM TYPE X-HVB 95 OR AS REQUIRED BY DESIGN), INSTALLED THROUGH 1.5" COMPOSITE METAL DECK INTO STEEL BEAMS USING HILTI DX 76 TOOL WITH MANUFACTURER-RECOMMENDED PISTON AND FASTENER GUIDE. CONNECTOR SPACING: 12" O.C. MAX ALONG THE BEAM. INSTALL CONNECTORS THROUGH THE DECK RIBS IN ACCORDANCE WITH HILTI ICC-ESR, ETA-15/0876, AND THE MANUFACTURER'S SHEAR CONNECTOR DESIGN GUIDE.



**3 TYPICAL BEAM CONNECTIONS**  
SCALE: 3/4"=1'-0"



**NOTE 1**  
GRATING SHALL BE GALVANIZED 1/4" x 3/8" SMOOTH WELDED STEEL WITH BEARING BARS AT 1 3/8" CENTER TO CENTER AND CROSS BARS AT 4" CENTERS. GRATING SHALL BE MECHANICALLY ATTACHED TO SUPPORT MEMBERS WITH GALVANIZED BENT SADDLE CLIP FASTENERS AND SHALL BE REMOVABLE.



**DETAIL E-E**  
N.T.S.

**8 BRACED FRAME** (B) & (E)  
SCALE: 3/4"=1'-0"

**11 SLAB OPENING DETAIL (IF REQ'D)**  
SCALE: 3/4"=1'-0"

REQUIRED AT ALL OPENINGS WHERE W > 18" AND A OR B > 1/2 SPAN LENGTH.  
**NOTE A:** SEE ARCHITECTURAL & MECHANICAL PLANS FOR LOCATION AND SIZE OF OPENINGS.  
**NOTE B:** CONCRETE SLAB POURED AND CURED PRIOR TO CUTTING OPENING IN METAL DECK.